

INSIDE THIS ISSUE:

Westside Inter-tie	2
Board Information	3
Office Project	3
Reminder	4

Board of Directors

Ben Serafin

President

Division 2

Don MacMillan

Vice President

Division 3

Tony Simonich

Division 1

Gary Fernandes

Division 4

Diane Bowman-Friend

Division 5

The Board of Directors meets on the second Tuesday of every month at 9:00 a.m. at the District office in Woodville. The public is invited to attend.

WESTSIDE INTER-TIE

PROJECT MOVES FORWARD—FIRST PHASE TO BE COMPLETED BY SPRING

In late November, District crews and equipment began construction on the first phase of the Westside Inter-tie Canal. The new canal has been under consideration for years and was part of the original Improvement District #6 project that was designed and constructed in the early 1980's.

With the rising cost of surface and groundwater supplies, and the evolution of on farm irrigation practices, the Board re-initiated the project in 1998 citing the need to improve capacity in all canals throughout the District. The Westside Inter-tie is designed to take water from the District's Lateral #4 Canal and deliver it south intersecting with the other three east to west laterals. (Please see drawing on page 2) Lateral #4 was the last major canal constructed by the District and was sized large enough to carry surplus water for an Inter-tie canal. The north to south delivery of water to the other three main laterals will free-up ca-

capacity west of the Road 88 alignment, thereby making more water available to those canals east of Road 88. The Design capacity of the Inter-tie canal calls for 250 cfs at the head of the canal with the ability to deliver 75 cfs into all three of the other main laterals. Purchase of right-of-way was completed in late 1999 and after reviewing several design and size options final design preparation began in 2001. One challenge faced by District crews and engineers staff was the need to do much of the construction while there was no water in the system, thus making for unpredictable and potentially narrow construction windows.

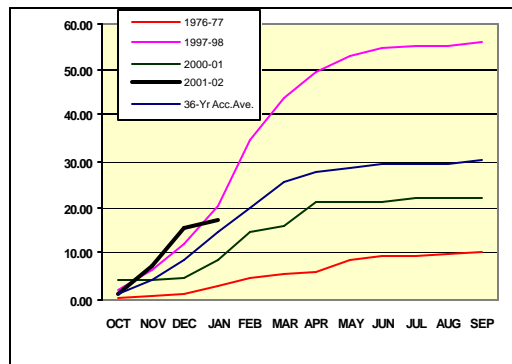
Multi-Phase Project

Given the size, cost and complexity of the timing necessary for construction the project is being done in at least three different phases. The first phase involves construction of one mile of new canal from Lateral #4 to Lateral #3. Included in

(Continued on page 2)

WATER SUPPLY REPORT

The 2002 water year got off to a great start with precipitation and snow-pack running fifty to seventy-five percent above normal for November and December. January has been dry and far below normal, accordingly the hope for a wet year is fading rapidly. Despite the dry January conditions, there remains a good chance that rain and snow in February and March will result in average water supplies for 2002.



cember resulted in flood releases from all local reservoirs during December and into the first half of January. More than 20,000 acre-

feet of water was released from Success Reservoir in order to comply with flood control rules. Those releases were terminated on January 16th.

Annual Water Supply

The chart on the right shows the precipitation in inches on the Tule River watershed for the 2002 water year, along

Early Flood Release

Heavy rains, along with wet low snow in De-

with other pertinent water years. While more than two-thirds of the District's average annual

(Continued on page 4)

Did you know?

Almost 200 million acre-feet of rain and snow falls on California every year

More than 100 million acre-feet soaks into the ground, evaporates, or is used by native vegetation. Only 71 million acre-feet is stored for usable surface water.

Of that water:

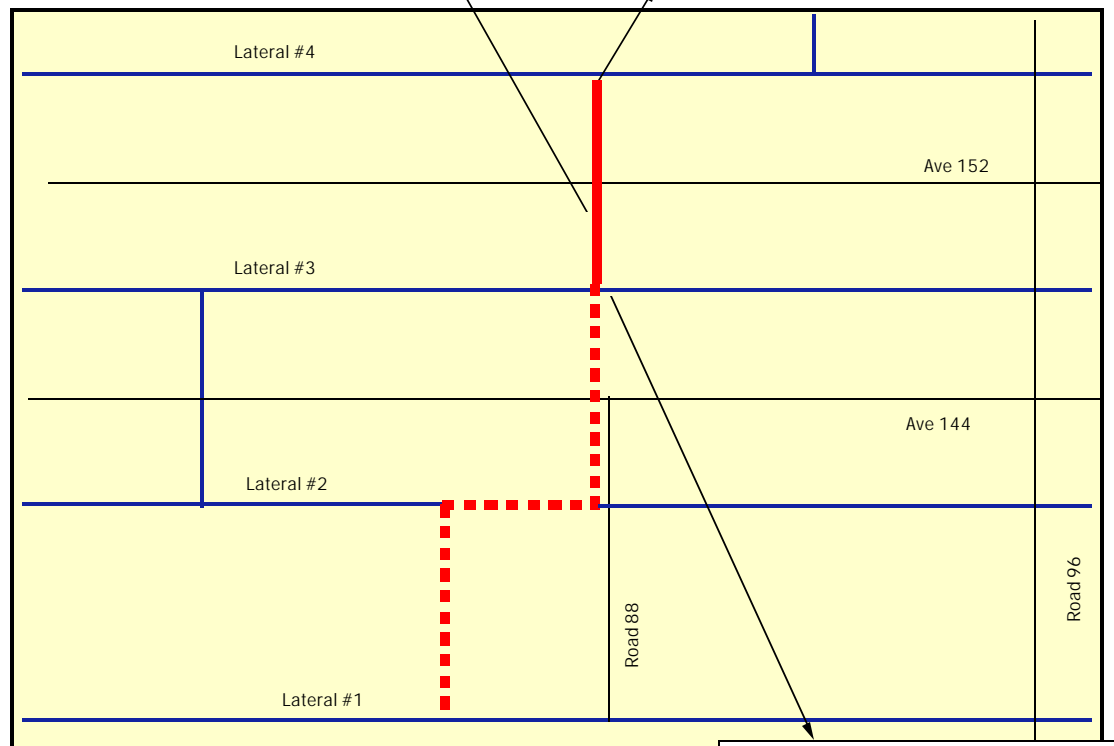
- 36% flows to the ocean
- 28% goes to wild and scenic rivers
- 28% is used by agriculture
- 7% is used by cities and towns

Source: ACWA



Excavation and Shaping of Inter-tie Canal from Lateral #4 to Lateral #3

Two 72" Outlets from Lateral #4 into Inter-tie Canal



(Continued from page 1)

that is the construction of a new turnout structure from Lateral #4 using two 72" concrete pipes, a road crossing at Avenue 152 and a crossing under Lateral #3. The second phase of the project will be the new canal and structures from Lateral #3 to Lateral #2 with the final phase being the enlarging of existing canal from Lateral #2 to Lateral #1. All of the construction and earth work is being done by District crews and equipment, the lone exception being the rental of the earth moving equipment which are being operated by District staff.

have no bearing on the completion of the project. Without grant money the project will be brought back into the regular capital improvement program that has monies budgeted in fiscal years 2002 and 2003.



Double Barrel 60" Pipe Under Lateral #3

Grant Money Sought for Funding

In order to assist with the cost of the project Lower Tule filed for financial assistance available through the State of California Proposition 13 Bond. An application was prepared in December requesting 1.7 million in funding for the completion of Phases II and III. Whether or not the District is successful in obtaining grant funding will

The illustration above shows the layout of the Westside Inter-tie project with pictures highlighting Phase I construction. Should you have any questions about the project please do not hesitate to contact the District office .

DISTRICT NEWS & NOTES



SERAFIN ELECTED BOARD PRESIDENT

At the December Board meeting Ben Serafin was unanimously elected President of the Lower Tule River Irrigation District Board of Directors. Serafin had been the Vice-President of the Board and now succeeds retired Director Bob Bowman as President. Serafin was first elected to the Board of Directors in 1985 succeeding Lee Ribeiro as Director of Division 2. Serafin also serves as President of the Deer Creek & Tule River Authority and represents Lower Tule at the Tule River Association. At the same meeting the Board unanimously elected Division 3 Director Don MacMillan as Vice-President of the Lower Tule Board. MacMillan has been on the Board since 1987. MacMillan was also appointed the District representative to the Friant Water Users Authority Board of Directors.

“For many years this District has benefited from outstanding leadership. My goal is to insure that we honor those men by continuing on the path that was laid out for us”

Ben Serafin
President
Lower Tule River Irrigation District

BOWMAN-FRIEND SUCCEEDS FATHER

Diane Bowman-Friend was appointed by the Tulare County Board of Supervisors to fill the Lower Tule Board vacancy in Division 5. The vacancy was created by the retirement of long time Director Bob Bowman. The appointment by the Board of Supervisors was made in lieu of an election. Elections for District positions are not held when only one person files for election. Bowman-Friend is the fourth daughter of former Director Bob Bowman and has been active in water and agricultural issues throughout the State of California for many years. Bowman-Friend and her family farm and live in Lower Tule.

NEW OFFICE CONSTRUCTION

Work continues on the construction of a new District office in Tipton. As it was reported in the last edition of the *Legend*, the District is working with the Pixley Irrigation District on the construction of a joint administrative facility in the town of Tipton. In September of 2001 the Districts purchased property east of the Highway 99 freeway south of Avenue 152. The four acre site will see the construction of a 5,000 square-foot office building that will house the District's administrative, water and engineering staff.

At present the District is working with the Townsend Architectural Group in preparing the plans necessary for construction. In addition, District staff are preparing various financing proposals that will be submitted to the Board along with the final plan for construction. While both Districts are able to cover the cost of construction without the need for financing, the Boards feel strongly that, given the favorable terms tax-exempt financing brings, if financing is available then the project should be amortized over 15-20 years. The Board's philosophy is that the present landowners should not have to bear the entire cost of something that landowners well into the future will benefit from, a concept that has been practiced for many years by the District's respective Boards.

Construction is expected to start in early spring with completion scheduled for fall of 2002.

GOVERNOR'S BUDGET INCLUDES FUNDING FOR RESERVOIR PROJECT

The 2002/2003 State budget as proposed by Governor Davis was released on January 11th and includes \$1.5 million for construction activities related to the enlargement of Success Reservoir. While the budget process is far from complete it is encouraging that the Davis Administration, despite massive budget cuts and spending reductions, has included the Success Reservoir Project as a priority. If the funding for 02/03 remains in the budget the money will be used for power line relocation, land purchases and recreation facility improvements. The 1.5 million was a positive step from an administration and State staff that to date has shown little initiative in moving the project forward. For the current fiscal year Lower Tule and other members of the project had to work through a special request via the State Senate to get construction funding, a move that was necessitated after the Governor and his staff ignored the construction aspect of the project in the 2002 Budget.

In addition to State funding, the project will require sizeable federal funding in the 2003 Federal Budget. Both the State and Federal Budgets are a long way from complete and only time will tell if the Success Reservoir Enlargement Project moves forward in 2003. The estimated date of completion remains several years away.

Coming Soon!

New Congressional District to Tulare County.

See what the candidates for the 21st District House seat have to say:



jimpattersonforcongress.com



nunesforcongress.com

Lower Tule River
Irrigation District

16563 Road 168
P.O. Box 4388
Porterville, California
93258-4388

Phone: 559-686-4716
Fax: 559-686-0151
Email: ltrid@ltrid.org



*Working together to
meet your water
needs now and into
our future*

Address

REMINDER: The District cannot accept dairy wastewater or irrigation runoff at any point in our canal system. We realize that the winter months often mean extra waste water and empty canals look like a good place for disposal. However, state regulation prohibits the dumping of waste water in public water ways. **The rules on this matter have gotten significantly more strident over the past year. If caught, the District and the offender could face fines of more than \$10,000.** If you know of any discharge into the District's canal system please call the office.

IMPORTANT DATES TO REMEMBER

- February 12 —Lower Tule Board Meeting
- February 18—President's Day Holiday—Office Closed
- June 20—Second Installment of 2002 Assessment Due

(Continued from page 1)

water supply comes from the San Joaquin River the Tule River precipitation index can be used as a relevant gauge to determine the type of water year the District can expect.

In an average year, Lower Tule has between 225,000 and 250,000 acre-feet available for irrigation delivery and recharge, typically between March and September. During 2001 only 105,000 acre-feet was available from contract supplies and transfers. When the available supply is that much below normal, the irrigation season is limited to summer (May-August) and is often broken into split runs in order to maximize available supplies and coordinate with on-farm irrigation operations.

As a result of the below average water supply

in 2001 the District will not have any water scheduled for carry-over from 2001 to 2002. In recent years as much as 10,000 acre-feet of contract supply has been carried over from one water year to the next. Carry-over water is a calculated risk in that carry-over water is the first water released from the reservoir in the event of spring flood releases. In addition, the Bureau charges the District an additional \$8-\$10 per acre-foot to reschedule water into a subsequent year, a cost that is non-refundable.

2002 Water Rates

As expected the Bureau of Reclamation has increased the water cost to the District for 2002. All efforts will be made by the Board and staff of the District to keep the 2002 in-District water rate as low as possible. For more information regarding rates and pricing please visit the District website at www.ltrid.org.

The *Legend* is published quarterly by the Lower Tule River Irrigation District. Questions about articles and items appearing in The *Legend* are encouraged. Readers are welcome to submit information they feel should be included. Both may be submitted to Lower Tule River Irrigation District. 559-686-4716